

SENTINEL

Pole & Traffic Equipment Limited

Traffic Accessories Catalogue

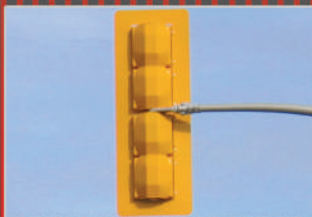
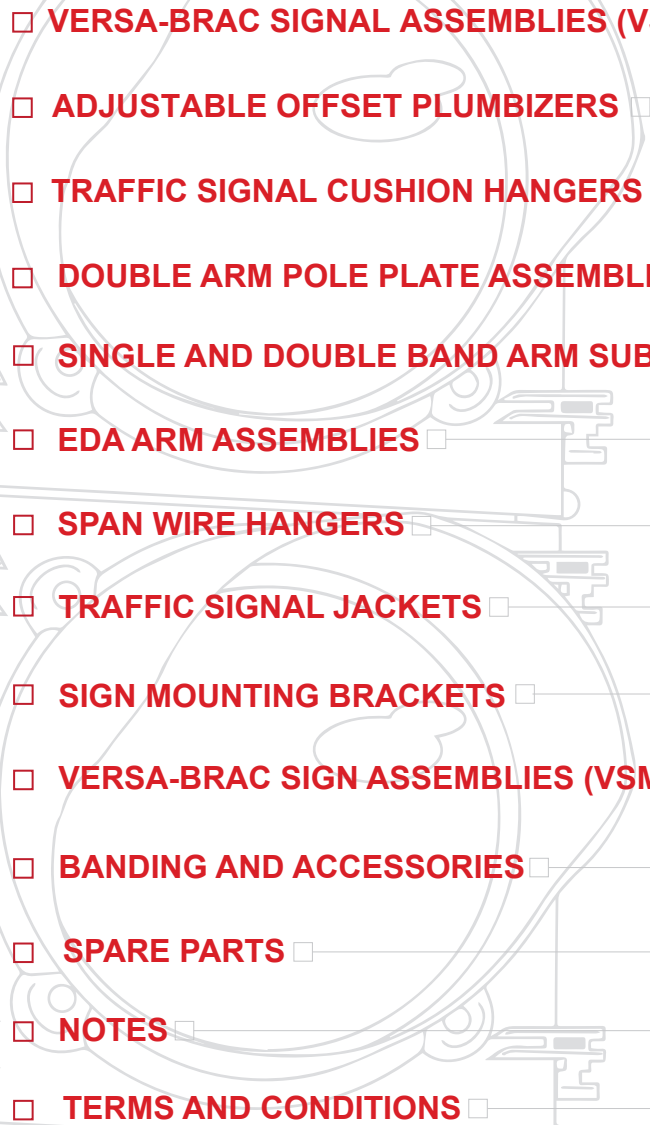




Table of Contents

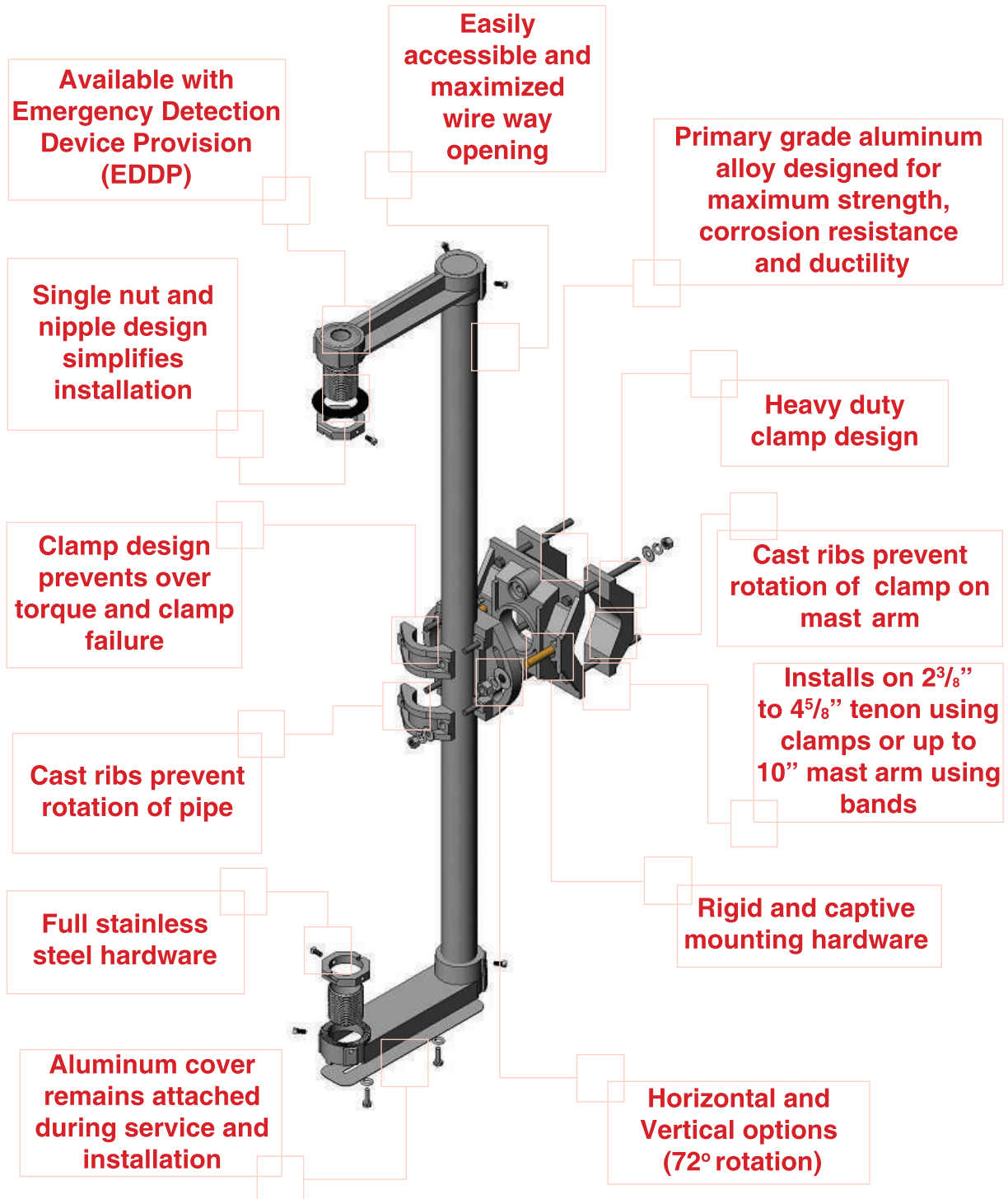


❑ VERSA-BRAC SIGNAL ASSEMBLIES (VSB's)	04
❑ ADJUSTABLE OFFSET PLUMBIZERS	11
❑ TRAFFIC SIGNAL CUSHION HANGERS	12
❑ DOUBLE ARM POLE PLATE ASSEMBLIES	13
❑ SINGLE AND DOUBLE BAND ARM SUB-ASSEMBLIES	14
❑ EDA ARM ASSEMBLIES	15
❑ SPAN WIRE HANGERS	16
❑ TRAFFIC SIGNAL JACKETS	17
❑ SIGN MOUNTING BRACKETS	18
❑ VERSA-BRAC SIGN ASSEMBLIES (VSMB's)	19
❑ BANDING AND ACCESSORIES	20
❑ SPARE PARTS	21
❑ NOTES	22
❑ TERMS AND CONDITIONS	23

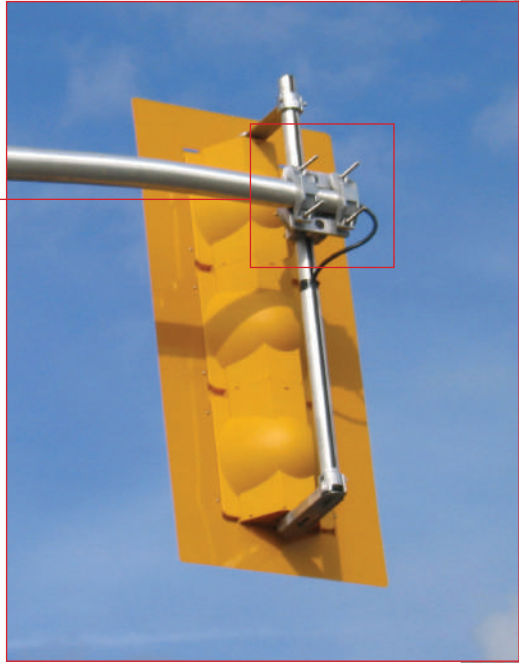
Versa-Brac Signal Assemblies

Quick & Simple Installation

No loose parts thus easy installation especially during winter conditions

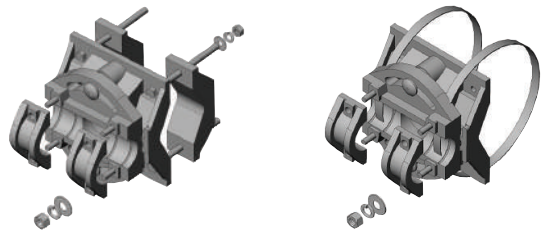
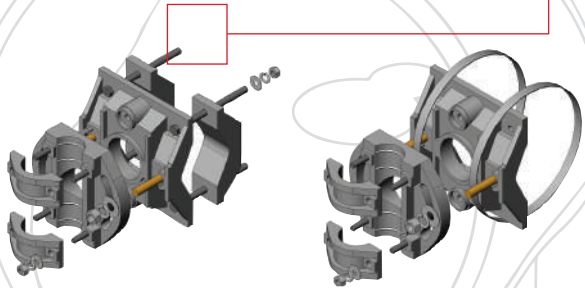


Features and Options

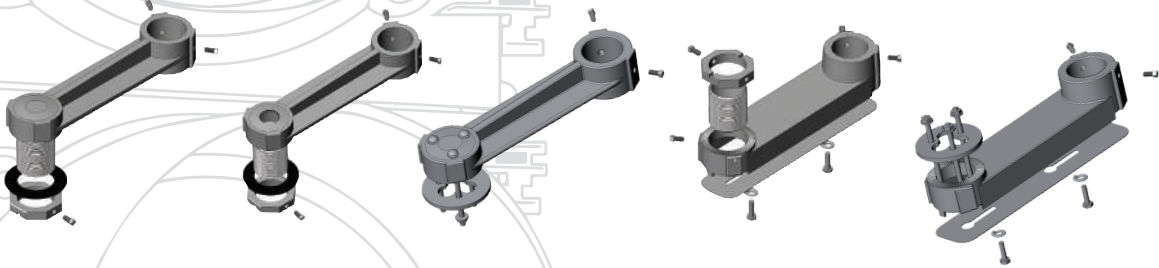


Vertical Mount Signals

Horizontal Mount Signals



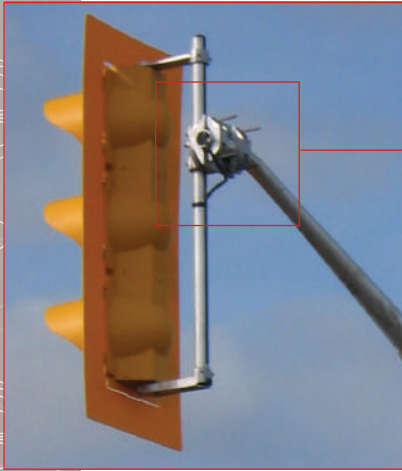
Arm Kits



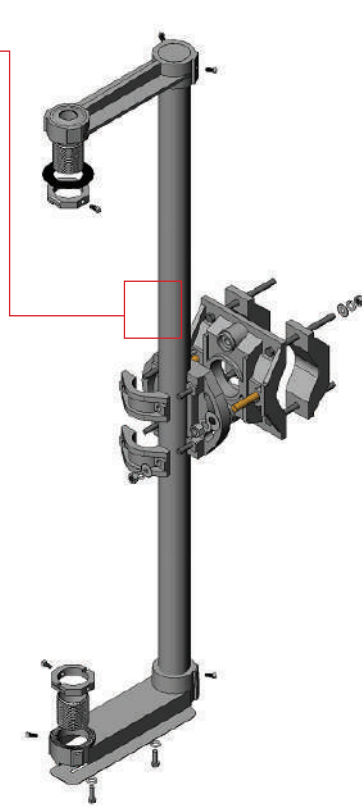
Pipe Options



Vertical Signal Assemblies



Clamp Mount



Band Mount



Clamp Mount Ordering Information

Number of Signals	Pipe Length	Part Number Standard	Part Number c/w EDDP*
1	24"	VSB-C-24	VSB-C-24-ED
2	38"	VSB-C-38	VSB-C-38-ED
3	46"	VSB-C-46	VSB-C-46-ED
4	58"	VSB-C-58	VSB-C-58-ED
5	74"	VSB-C-74	VSB-C-74-ED

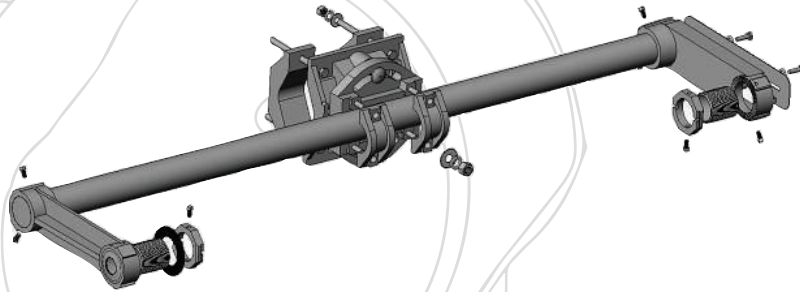
Band Mount Ordering Information

Number of Signals	Pipe Length	Part Number c/w 36" band Standard	Part Number c/w 48" band Standard	Part Number c/w 36" band & EDDP*	Part Number c/w 48" band & EDDP*
1	24"	VSB-B36-24	VSB-B48-24	VSB-B36-24ED	VSB-B48-24ED
2	38"	VSB-B36-38	VSB-B48-38	VSB-B36-38ED	VSB-B48-38ED
3	46"	VSB-B36-46	VSB-B48-46	VSB-B36-46ED	VSB-B48-46ED
4	58"	VSB-B36-58	VSB-B48-58	VSB-B36-58ED	VSB-B48-58ED
5	74"	VSB-B36-74	VSB-B48-74	VSB-B36-74ED	VSB-B48-74ED

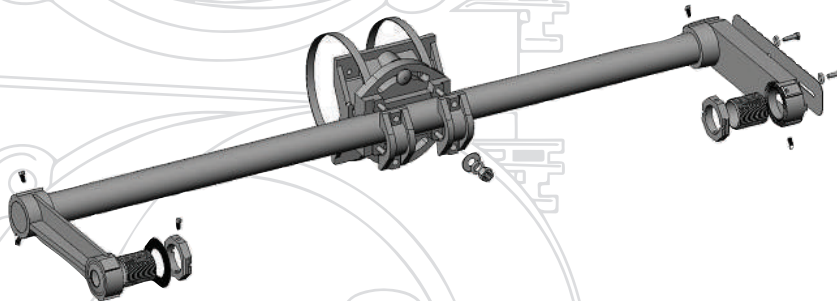
* EDDP = Emergency Detection Device Provision

Horizontal Signal Assemblies

Clamp Mount



Band Mount



Clamp Mount Ordering Information

Number of Signals	Pipe Length	Part Number Standard	Part Number c/w EDDP*
1	24"	VSBH-C-24	VSBH-C-24-ED
2	38"	VSBH-C-38	VSBH-C-38-ED
3	46"	VSBH-C-46	VSBH-C-46-ED
4	58"	VSBH-C-58	VSBH-C-58-ED
5	74"	VSBH-C-74	VSBH-C-74-ED

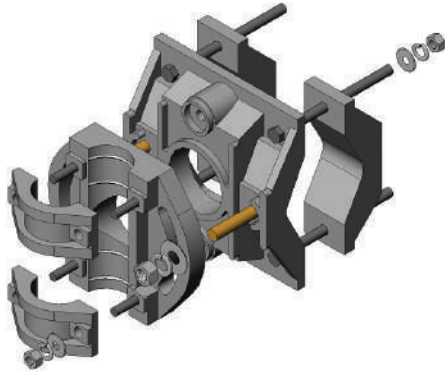
Band Mount Ordering Information

Number of Signals	Pipe Length	Part Number 36" band Standard	Part Number c/w 48" band Standard	Part Number c/w 36" band & EDDP*	Part Number c/w 48" band & EDDP*
1	24"	VSBH-B36-24	VSBH-B48-24	VSBH-B36-24ED	VSBH-B48-24ED
2	38"	VSBH-B36-38	VSBH-B48-38	VSBH-B36-38ED	VSBH-B48-38ED
3	46"	VSBH-B36-46	VSBH-B48-46	VSBH-B36-46ED	VSBH-B48-46ED
4	58"	VSBH-B36-58	VSBH-B48-58	VSBH-B36-58ED	VSBH-B48-58ED
5	74"	VSBH-B36-74	VSBH-B48-74	VSBH-B36-74ED	VSBH-B48-74ED

* EDDP = Emergency Detection Device Provision

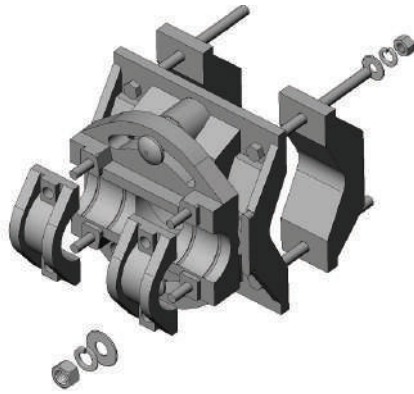
Hub Assemblies

■ ■ ■ Clamp Hub for Vertical Signals



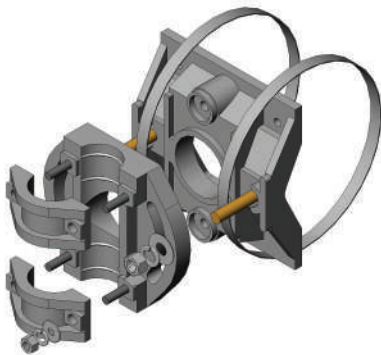
■ **Part Number:** VSB HUB-C

■ ■ ■ Clamp Hub for Horizontal Signals



■ **Part Number:** VSBH-HUB-C

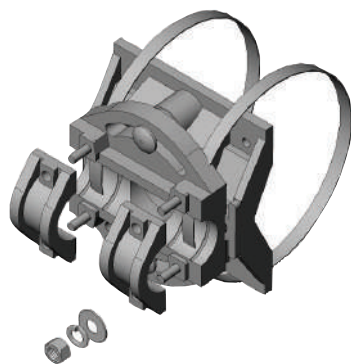
■ ■ ■ Band Hub for Vertical Signals



■ ■ ■ Ordering Information

Part Number	Band Size
VSB-HUB-B36	36"
VSB-HUB-B48	48"
VSB-HUB-B56	56"

■ ■ ■ Band Hub for Horizontal Signals



■ ■ ■ Ordering Information

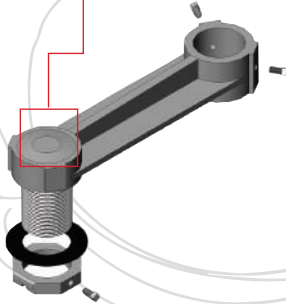
Part Number	Band Size
VSBH-HUB-B36	36"
VSBH-HUB-B48	48"
VSBH-HUB-B56	56"

Top and Bottom Arms

Features

- Unique nipple design simplifies location of signal heads
- Requires only one nut per arm for proper securing
- Octagonal nut permits easy tightening within tight spaces
- Set screw locking feature of nut minimizes the necessity for over torque and possible damage to signal heads
- Available with 3/4 NPT provision for Emergency detection devices
- Bottom aluminum access cover remains attached to arm during installation and maintenance
- Available in universal nut or tri-bolt mounts

Available with "EDDP"



Ordering Information (Universal Nut)

Part Number	Description
VSBAK-85	8.5" CTC* arm kit c/w one top and one bottom arm
VSBAK-85-ED	8.5" CTC* arm kit c/w one top arm with EDDP** option and one bottom arm
VSBAK-1T-85	8.5" CTC* top arm
VSBAK-1T-85-ED	8.5" CTC* top arm with EDDP** option
VSBAK-2T-85	8.5" CTC* arm kit c/w 2 top arms

* CTC = Center To Center

** EDDP = Emergency Detection Device Provision

Ordering Information (Tri-bolt Mount)

Part Number	Description
VSBAKT-85	8.5" CTC* arm kit c/w one top and one bottom arm
VSBAKT-85-ED	8.5" CTC* arm kit c/w one top arm with EDDP** option and one bottom arm
VSBAKT-1T-85	8.5" CTC* top arm
VSBAKT-1T-85-ED	8.5" CTC* top arm with EDDP** option
VSBAKT-2T-85	8.5" CTC* arm kit c/w 2 top arms

* CTC = Center To Center

** EDDP = Emergency Detection Device Provision

Versa-Brac Pipe Extrusions

Unique tube profile eliminates the need for filler extrusions and eliminates cross threading during assembly and installation. Flexible wire access extrusion cover ensures easy assembly and maintenance especially during winter conditions.



Pipe Extrusion Plain Ends

1 section (24" pipe)	2 sections (38" pipe)	3 sections (46" pipe)	4 sections (58" pipe)	5 sections (74" pipe)
VSBP-NT-24	VSBP-NT-38	VSBP-NT-46	VSBP-NT-58	VSBP-NT-74



Pipe Extrusion Threaded NPS On One End

1 section (24" pipe)	2 sections (38" pipe)	3 sections (46" pipe)	4 sections (58" pipe)	5 sections (74" pipe)
VSBP-1T-24	VSBP-1T-38	VSBP-1T-46	VSBP-1T-58	VSBP-1T-74



Pipe Extrusion Threaded NPS On Both Ends

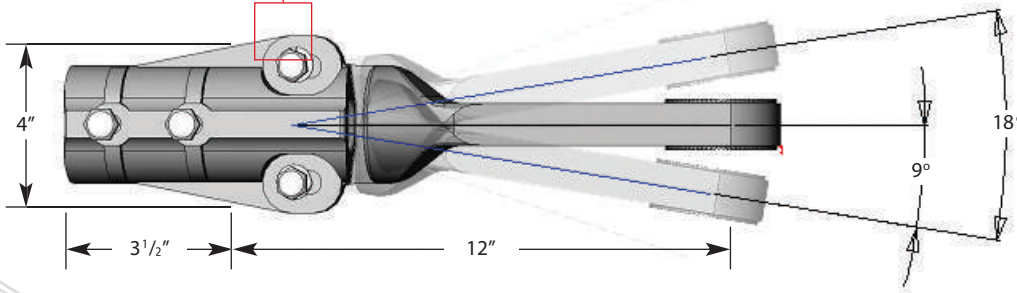
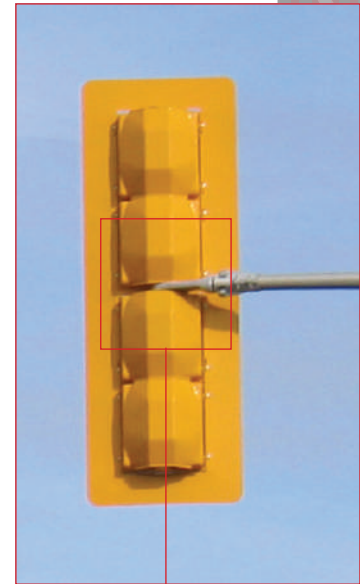
1 section (24" pipe)	2 sections (38" pipe)	3 sections (46" pipe)	4 sections (58" pipe)	5 sections (74" pipe)
VSBP-2T-24	VSBP-2T-38	VSBP-2T-46	VSBP-2T-58	VSBP-2T-74

NOTE - NPS: National Pipe Straight Thread

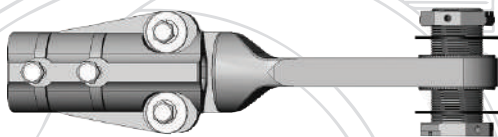
Adjustable Offset Plumbizers

Features

- Mounts to a 2 3/8" diameter mast arm tenon
- Adjustable for precise orientation (2 piece assembly), 18 ° degrees of adjustment
- No loose parts thus no assembly required
- Unique nipple design simplifies installation
- Installs between signal heads to minimize stress
- Easy access to adjustment bolts
- Radial serrations ensure proper and secure locking between heads and plumbizer mount
- Maximized wiring opening
- Octagonal universal nut with set screw option for locking reduces over torque of nut on heads (T-Type)
- Piercing point bolts ensures a secure installation
- Stainless steel hardware
- Heat treated primary aluminum alloy

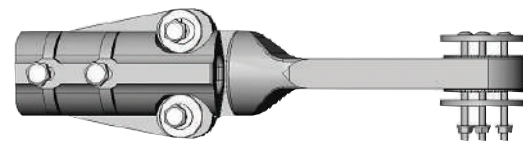


T-Type Nipple



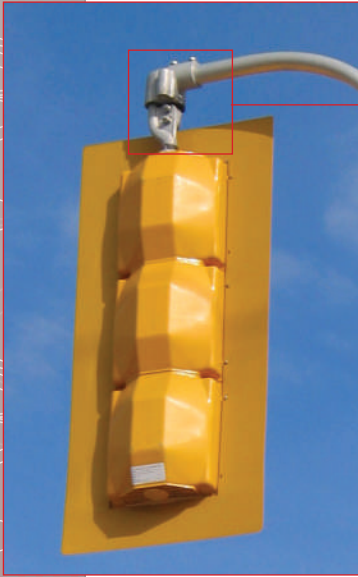
■ **Part Number:** AP4020-T

Tri-Bolt Joining Kit



■ **Part Number:** AP42830

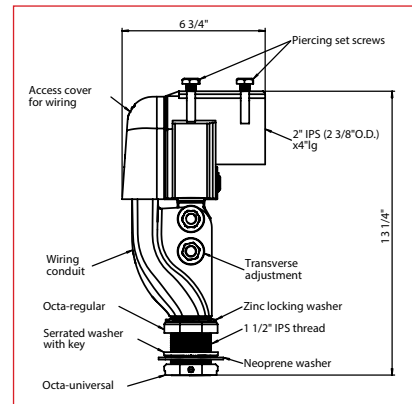
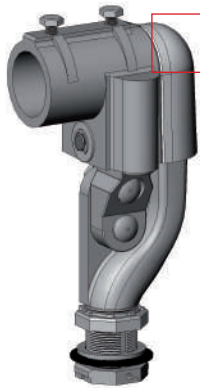
Traffic Signal Cushion Hangers



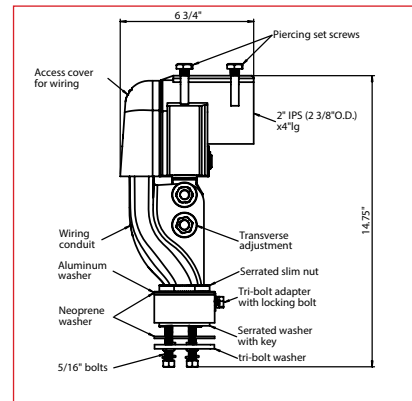
Features

- Mounts to a 2 3/8" diameter mast arm tenon
- Flexible mount minimizes head breakage (pre-compressed cushion)
- Quick and easy single point mounting of signals
- Stainless/bronze internal pivot assembly increases life-span of hanger
- Easily removable wiring entrance cover for quick and easy wire access
- Two 1/2" bolts are easily accessible for levelling to plus or minus 7.5 degrees from vertical, providing a total of 15 degrees adjustment
- Stainless steel hardware
- Piercing point bolts ensure a secure installation
- Aluminum castings are made via a permanent mould process to maximize strength, ductility and corrosion resistance
- Ships fully assembled with no loose parts
- Available with octagonal universal nut or tri-bolt mounts

■ **Part Number:** STE4025



■ **Part Number:** STE4026 (Tri-bolt)



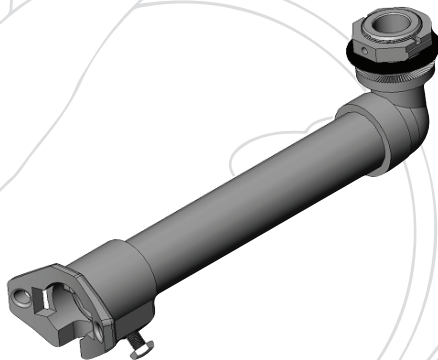
Double Arm Pole Plate Assemblies

Features

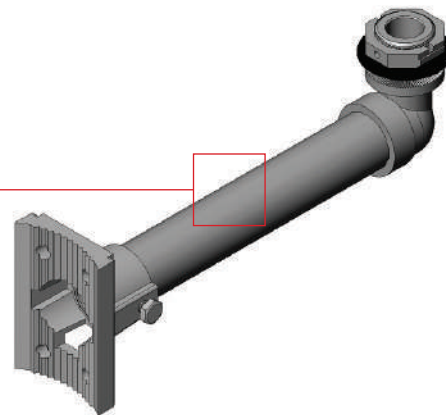
- Available in single or double band pole plates
- Radial serrations on elbow ensure locking between elbow and head assembly
- Octagonal universal nut with set screw option reduces over torque of nut on signals
- Universal band or bolt option for mounting to poles
- Available in standard or special pipe lengths
- Pole plate and elbow are cast from primary aluminum alloy for maximum strength corrosion resistance and ductility
- Full stainless steel hardware



Single Band

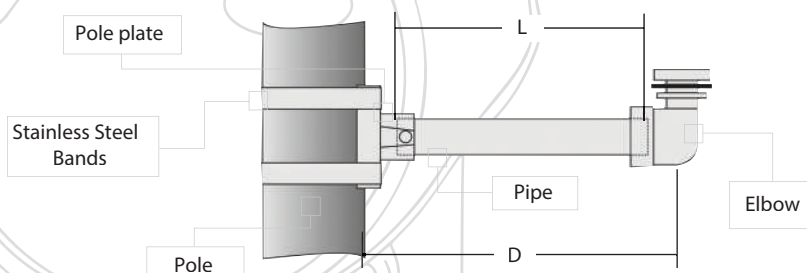


Double Band



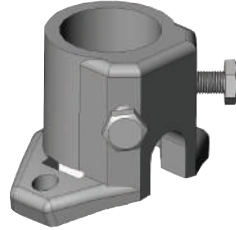
Ordering Information

Single Band Part Number	Double Band Part Number	Number of arms per kit	"D" Size	"L" Size
SB-RDPSA-10-2	DB-RDPSA-10-2	2	10"	8"
SB-RDPSA-12-2	DB-RDPSA-12-2	2	12"	10"
SB-RDPSA-16-2	DB-RDPSA-16-2	2	16"	14"
SB-RDPSA-18-2	DB-RDPSA-18-2	2	18"	16"
SB-RDPSA-20-2	DB-RDPSA-20-2	2	20"	18"
SB-RDPSA-24-2	DB-RDPSA-24-2	2	24"	22"



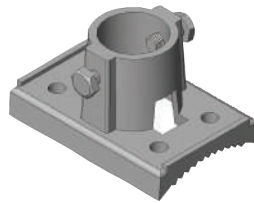
Single and Double Band Arm Sub-Assemblies

Single Band Pole Plate



- **Part Number:**
 SB-PP-SB (straight bore)
 SB-PP-TB (tapered bore)
 SB-PP-NPS
 SB-PP-NPT

Double Band Pole Plate



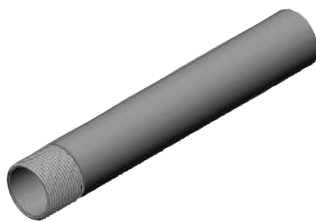
- **Part Number:**
 DB-PP-SB (straight bore)
 DB-PP-TB (tapered bore)
 DB-PP-NPS
 DB-PP-NPT

90° Elbow c/w Gasket and Octagonal Nut



- **Part Number:** PIPE-ELBOW

Double Arm Pipe Extrusions



Pipe Type (1 1/2" SCH 40 Pipe)

Part Number	"D" Size	"L" Size
DAP-10	10"	8"
DAP-12	12"	10"
DAP-16	16"	14"
DAP-18	18"	16"
DAP-20	20"	18"
DAP-24	24"	22"

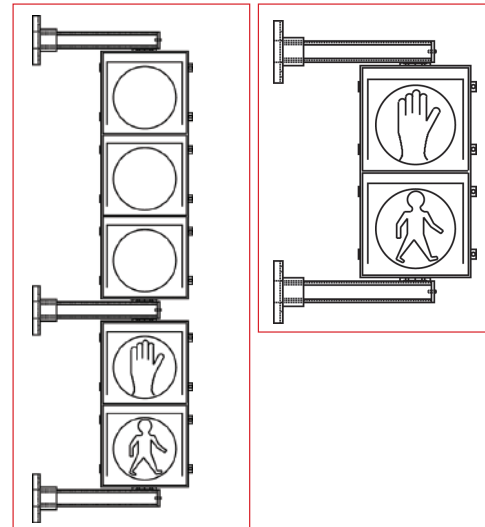
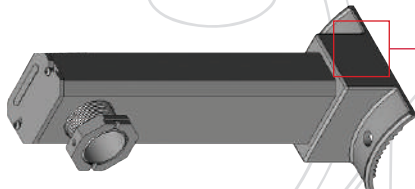
EDA Arm Assemblies

Features

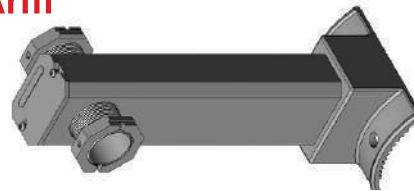
- Single or double arm application
- One piece arm construction, no welded joints
- No assembly required, no loose parts
- Unique nipple design simplifies head installation
- Locking features (with set screw) of octagonal nut prevents unfastening of nut caused by vibration
- Large accessible wiring access cover always remains on arm during wiring and installation
- Band or bolt option for mounting to poles
- Available up to 34" lengths
- Multiple applications (cameras, detectors, solar panels or signal assembly)
- Primary aluminum alloy for maximum strength, corrosion resistance and ductility



Top and Bottom Arm



Center Arm

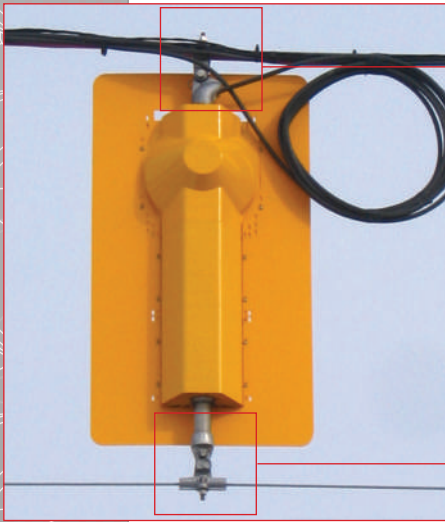


Ordering Information

Top & Bottom Arm Part Number	Center Arm Part Number	Number of arms per P/N	"D" size*
SQPSA-9.5	SQPSA-C-9.5	1	9.5"
SQPSA-12	SQPSA-C-12	1	12"
SQPSA-14	SQPSA-C-14	1	14"
SQPSA-16	SQPSA-C-16	1	16"
SQPSA-18	SQPSA-C-18	1	18"
SQPSA-24	SQPSA-C-24	1	24"

*"D" size = Distance from the pole to center of nipple

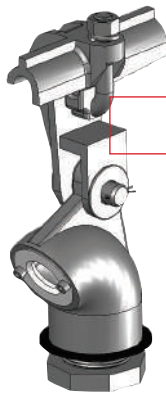
Span Wire Hangers



Features

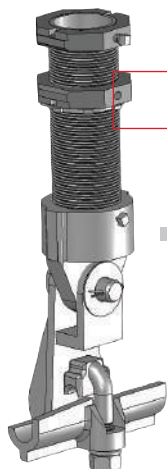
- Top and bottom clamps work on a “twist and hang” technique for easy installation
- No loose parts thus no assembly required
- Single bolt tightening for quick securing to cable
- Bottom clamp stabilizer casting allows various nipple lengths that adapt to all signal sizes and quantities
- Cast aluminum hook bolt reduces damage to suspension cables
- High quality assembly is suitable for permanent applications
- Multiple applications (Signs, Priority Control
- Detectors, cameras and signal heads)
- Primary cast aluminum alloy for maximum strength, corrosion resistance and ductility
- Stainless steel hardware

Hanger

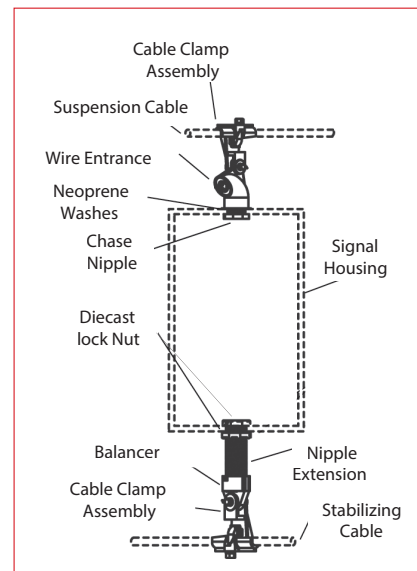


■ Part Number: SWH-TM

Stabilizer

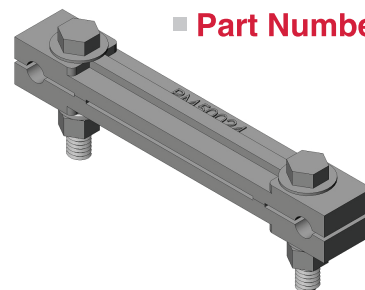


■ Part Number: SWH-BM



Suspension Wire Clamp

■ Part Number: SWC



Traffic Signal Jackets

Features

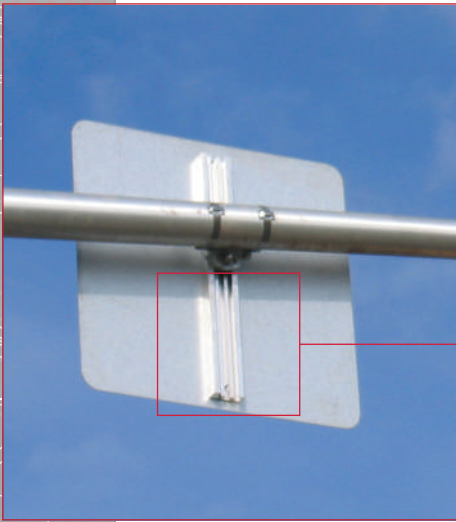
- Ideal to cover inoperable signals during extended periods of maintenance or new installations
- Manufactured from black U.V. stabilized Dacron fabric with a tensile strength of 400 MPa
- Covers the full face of the signal, and overlaps the back board by 125mm
- Secured to signal by polypropylene straps and Acetal snap clips. For additional security, each Jacket also contains 15mm stainless steel grommets
- Front of Jacket is made of a mesh material so that light can be seen during technical viewing
- Fits all 8" and 12" Head size configurations

Ordering Information

Part Number	Number of Sections/Heads	Complete With
TJ3H	3	2 straps and 6 grommets
TJ4H	4	3 straps and 8 grommets



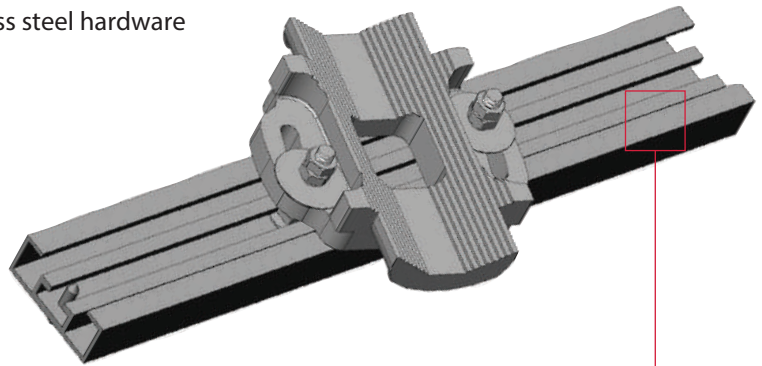
Sign Mounting Brackets



Sign Assembly

Features

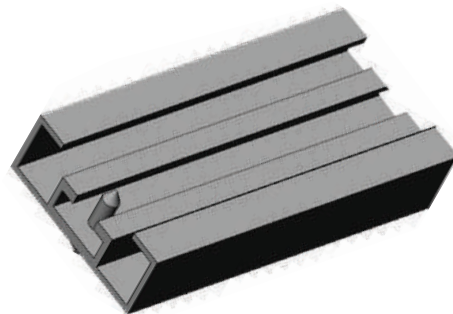
- Simple slide installation
- 33 degrees of rotation adjustment
- Available in pre-cut length or 8' length
- Stainless steel hardware



Ordering Information

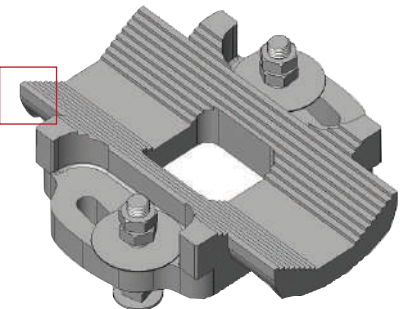
Part Number	Extrusion Size
SMBA - 12	12"
SMBA - 18	18"
SMBA - 24	24"
SMBA - 36	36"
SMBA - 48	48"

Extrusion (8' Length)



■ **Part Number:** SMBE-L

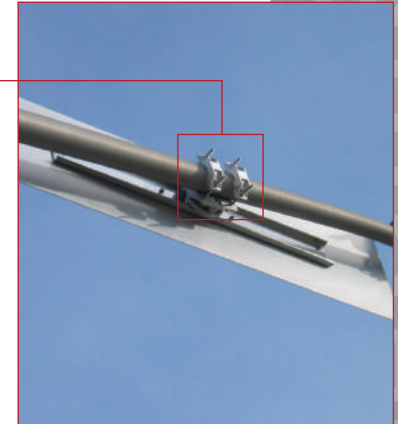
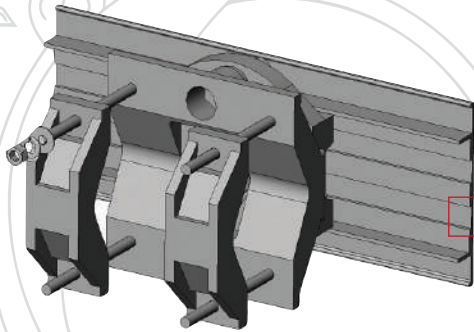
Mounting Casting



■ **Part Number:** SMBC

Versa-Brac Sign Assemblies

Versa-Brac Sign Assembly



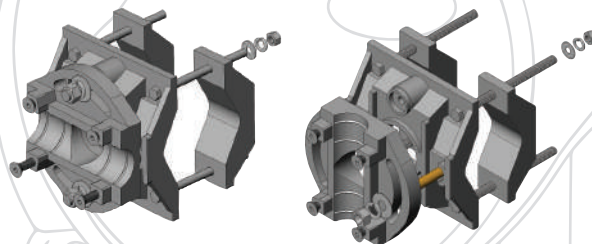
Ordering Information

Extrusion Length	Part Number c/w Back Clamps		Part Number c/w 36" Band Standard		Part Number c/w 48" Band Standard	
	Horizontal	Vertical	Horizontal	Vertical	Horizontal	Vertical
24"	VSMB-C-24	VSMBV-C-24	VSMB-B36-24	VSMBV-B36-24	VSMB-B48-24	VSMBV-B48-24
36"	VSMB-C-36	VSMBV-C-36	VSMB-B36-36	VSMBV-B36-36	VSMB-B48-36	VSMBV-B48-36
48"	VSMB-C-48	VSMBV-C-48	VSMB-B36-48	VSMBV-B36-48	VSMB-B48-48	VSMBV-B48-48
60"	VSMB-C-60	VSMBV-C-60	VSMB-B36-60	VSMBV-B36-60	VSMB-B48-60	VSMBV-B48-60
72"	VSMB-C-72	VSMBV-C-72	VSMB-B36-72	VSMBV-B36-72	VSMB-B48-72	VSMBV-B48-72

Hub Clamp

Ordering Information

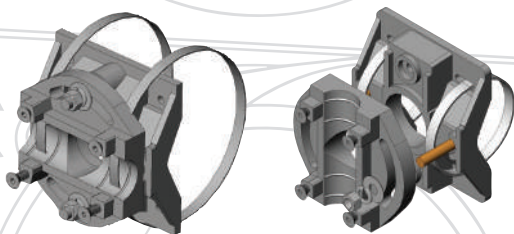
- Part Number: VSMB.HUB-C (horizontal)
VSMBV.HUB-C (vertical)



Band Clamp

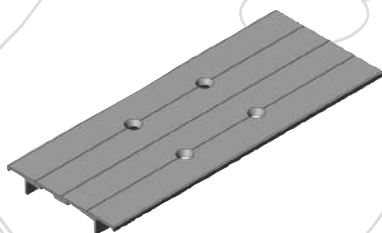
Ordering Information

Part Number		Band Length
Horizontal	Vertical	
VSMB-HUB-B36	VSMBV-HUB-B36	36"
VSMB-HUB-B48	VSMBV-HUB-B48	48"
VSMB-HUB-B56	VSMBV-HUB-B56	56"



Extrusion

- Part Number: VSMBE-L



Banding and Accessories

Stainless Steel Band



Part Number	Width		Thickness	
	Inches	mm	Inches	mm
PB-203	3/8	9.53	0.025	0.63
PB-204	1/2	12.70	0.030	0.76
PB-205	5/8	15.88	0.030	0.76
PB-206	3/4	19.05	0.030	0.76

Type 201 Stainless Steel. 100ft/Roll

Stainless Steel Buckles

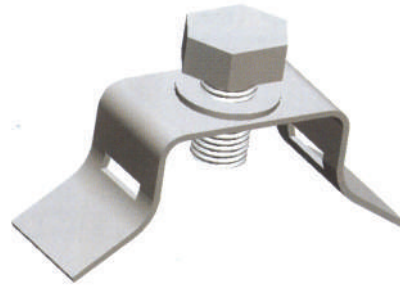
Part Number	Width		Weight	
	Inches	mm	Lbs	kg
PB-253	3/8	9.53	0.8	0.4
PB-254	1/2	12.70	2.1	1.0
PB-255	5/8	15.88	2.4	1.1
PB-256	3/4	19.05	3.7	1.7

Type 201 Stainless Steel Buckles. 100 per box



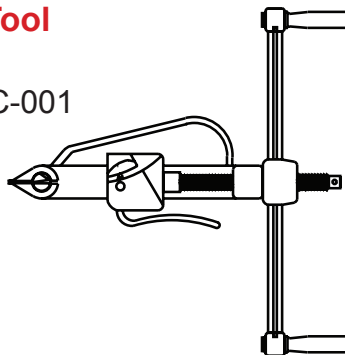
Flared Signage Brackets

- Part Number: PD-021 (maxi)
PD-310 (mini)
PD-001 (straight)



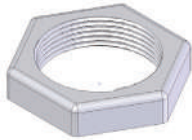
Banding Tool

- Part Number: C-001

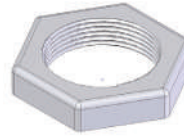


Spare Parts

6 Sided Slim Hex.
Part Number: **HN-150-S** 2⁵/₁₆" Across Flats



6 Sided Regular Hex.
Part Number: **HN-150-R** 2¹/₂" Across Flats



Octa Regular
Part Number: **ON-150-R** 2¹/₂" Across Flats



Octa Universal
Part Number: **ON-150-SU** 2¹/₂" Across Flats



Zinc Lock Nut
Part Number: **ZINC-LN**



Chase Nipple
Part Number: **CN 1.5-2**



NPS Nipple
Part Number: **N 1.5-2**



Tri-Bolt Kit
Part Number: **TRI-BOLT-KIT**



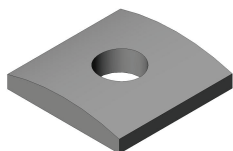
Closure Cap
Part Number: **CLO-CAP**



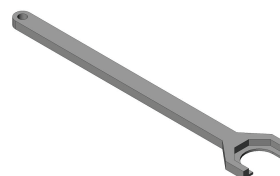
EDDP Closure Cap
Part Number: **CLO-CAP-ED**



Curved Washer
Part Number: **CURVED-WASHER**



Traffic Wrench
Part Number: **TSW-14**



*All Threads are 1 1/2" NPS

Terms & Conditions

Prices and Taxes

All prices are subject to change without notice. Quotations are based on plans and specifications and are our interpretation of the requirements and only include the material described and listed on the quotation. Quotations will be in writing and terminate 30 days after the issue date unless otherwise stated. Orders delayed or put on hold by the customer will not be protected against price increases. Sentinel Pole & Traffic Equipment reserves the right to add any applicable sales tax, duty or fee which may be imposed on its product to the sales price of that product.

Cancellation

The written consent of Sentinel Pole & Traffic Equipment is required prior to cancellation of any order. Cancellation charges based upon work already started or based on any commitments given by Sentinel Pole & Traffic Equipment will be charged to the customer.

Returned Goods Policy

All returned goods are subject to inspection by Sentinel Pole & Traffic Equipment and returned material must be new and unused. Permission for return of goods must first be secured from Sentinel Pole & Traffic Equipment in writing.

Delays, Damage or Loss

Sentinel Pole & Traffic Equipment is not liable for delays in shipment or delivery of its products when caused by or arising from the breakdown of equipment, fires, material shortage or any other cause beyond its reasonable control.

Transportation

All shipments are FOB Mississauga, ON, Canada. "Prepaid and charged" or "prepaid" options are also available but must be requested during the quotation process. All claims for shortages must be made in writing within 15 days of receipt of shipment.

Warranty

Sentinel Pole & Traffic Equipment warrants its products to be free from defects in materials and workmanship for a period of one year from the invoice date when used under normal use and service. All goods found to be defective within this period, after investigation by Sentinel Pole & Traffic Equipment, shall be replaced or repaired by Sentinel Pole & Traffic Equipment free of charge. This warranty excludes fatigue failure or similar phenomena resulting from vibration or resonance associated with the movement of air currents around the product. Further, labor required to remove and/or reinstall original replacement products will be the responsibility of the customer. All freight charges will be the customer's responsibility and repaired material will be FOB Mississauga, ON, Canada. This warranty excludes damage caused by improper installation, overloading, misuse, abuse or neglect. In addition, this warranty does not cover alterations, modifications, or additions unless the change is acknowledged and accepted in advance by Sentinel Pole & Traffic Equipment.

SENTINEL

Pole & Traffic Equipment Limited

www.sentineltraffic.com

Established in 1985, SENTINEL Pole & Traffic Equipment Limited is a leading supplier of Traffic and Roadway Lighting products and related accessories.

A supplier of choice to Government Agencies, Counties, Cities, Municipalities and Maintenance Contractors, SENTINEL Pole & Traffic Equipment carries a large inventory of high quality items to meet your needs.

For additional information please contact us:
375 Admiral Blvd, Unit 3,
Mississauga, ON
L5T 2N1

Tel: (905) 564-2929
Fax: (905) 564-0755
info@sentineltraffic.com